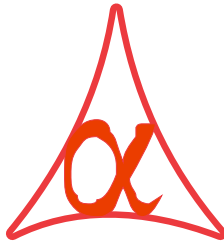




POWER OF SIMPLICITY

Cash Bank Ledger Control in Voucher - 1.0



Alpha Automation Pvt. Ltd.

Head Office

336-Madhva Plaza, Opp. SBI Bank,

Nr. Lal Bungalow, JAMNAGAR –Gujarat (India)

Phone No. : +91-288-2660530/31, +91-9099908115, 9825098442

Email : tdl@aaplautomation.com

Branch Office

Rajkot : 807-Dhanrajni Complex, Nr. Hotel Imperial Palace, Dr. Yagnik Road, RAJKOT (Gujarat).

Gandhidham : 92-GMA Building, 2nd Floor, Plot No. -297, Sector-12B. GANDHIDHAM (Gujarat)

© 2012 Alpha Automation Pvt. Ltd.. All rights reserved.

Tally, Tally 9, Tally9, Tally.ERP, Tally.ERP 9, Shoper, Shoper 9, Shoper POS, Shoper HO, Shoper 9 POS, Shoper 9 HO, Tally Developer, Tally. Developer 9, Tally.NET, Tally Development Environment, Tally Extender, Tally Integrator, Tally Integrated Network, Tally Service Partner, Tally Academy & Power of Simplicity are either registered trademarks or trademarks of Tally Solutions Pvt. Ltd. in India and/or other countries. All other trademarks are properties of their respective owners.

Version: Alpha Automation Pvt. Ltd. /Cash Bank Ledger Control in Voucher /1.0/

Nov-2016.

Cash Bank Ledger Control in Voucher - 1.0

Introduction

This Add-On facilitates to bifurcate to accounting of Bank and Cash ledger filter through using separate voucher type. This also helps to restrict on selection of Cash or Bank ledger in respective vouchers types for error free bank and cash vouchers.

Multiple voucher types are used, such as Cash Payment, Bank Payment, Cash Receipt and Bank Receipt, for entry convenience. In those cases this feature is most useful for error control in wrong selection of Cash or Bank ledgers in respective linked voucher entries.

Important!

As a best practice it is advisable to back up your company data

Installation

1. Copy the TCP file in Tally.ERP9 Folder.
2. Gateway of Tally → F12→ Product & Features → F4 (Manage Local TDL) → Select Yes in Load TDL on Start up and give the file name of TCP File. After pressing the Enter Key will show TDL Status which should be Active.

System requirements:

No additional hardware / software infrastructure is required for executing and operation this applications module

Setup Guide

For Tally.ERP 9 Series A Release 3.1 and below

Go to **Gateway of Tally > F11: Features > Accounting Features**

Set “Yes” to the options “Enable Cash Bank Ledger Control in Voucher ?”

Company: Abc Company Ltd			
Accounting Features			
General		Invoicing	
Integrate Accounts and Inventory	? Yes	Allow Invoicing	? Yes
Income/Expense Statement instead of P & L	? No	Enter Purchases in Invoice Format	? Yes
Allow Multi-Currency	? Yes	Use Debit/Credit Notes	? Yes
Outstandings Management		Use Invoice mode for Credit Notes	? Yes
Maintain Bill-wise Details (for Non-Trading A/cs also)	? Yes	Use Invoice mode for Debit Notes	? Yes
	? Yes	Budgets & Scenario Management	
Activate Interest Calculation (use advanced parameters)	? Yes	Maintain Budgets and Controls	? Yes
	? Yes	Use Reversing Journals & Optional Vouchers	? Yes
Cost/Profit Centres Management		Other Features	
Maintain Payroll	? Yes	Enable Cheque Printing	? Yes
Maintain Cost Centres	? Yes	Set/Alter Cheque Printing Configuration	? No
Use Cost Centre for Job Costing	? No	Allow Zero valued entries	? Yes
More than ONE Payroll / Cost Category	? Yes	Maintain Multiple Mailing Details for Company & Ledgers	? Yes
Use Pre-defined Cost Centre Allocations during Entry	? No	Set/Alter Company Mailing Details	? No
Show Opening Balance for Revenue Items in Reports	? No	Enable Company Logo	? No
		Enable Cash Bank Ledger Control in Voucher	? Yes

Accept ?

F1: Accounts F2: Inventory F3: Statutory **Yes or No**

For Tally.ERP 9 Series A Release 3.2 and above

Go to **Gateway of Tally > F11: Features > Add-on Features**

Set “Yes” to the options “Enable Cash Bank Ledger Control in Voucher ?”

Company: **Demo Company**

Add-On Features

Enable Cash Bank Ledger Control in Voucher ? **Yes**

Click on Shop button to buy Add-Ons

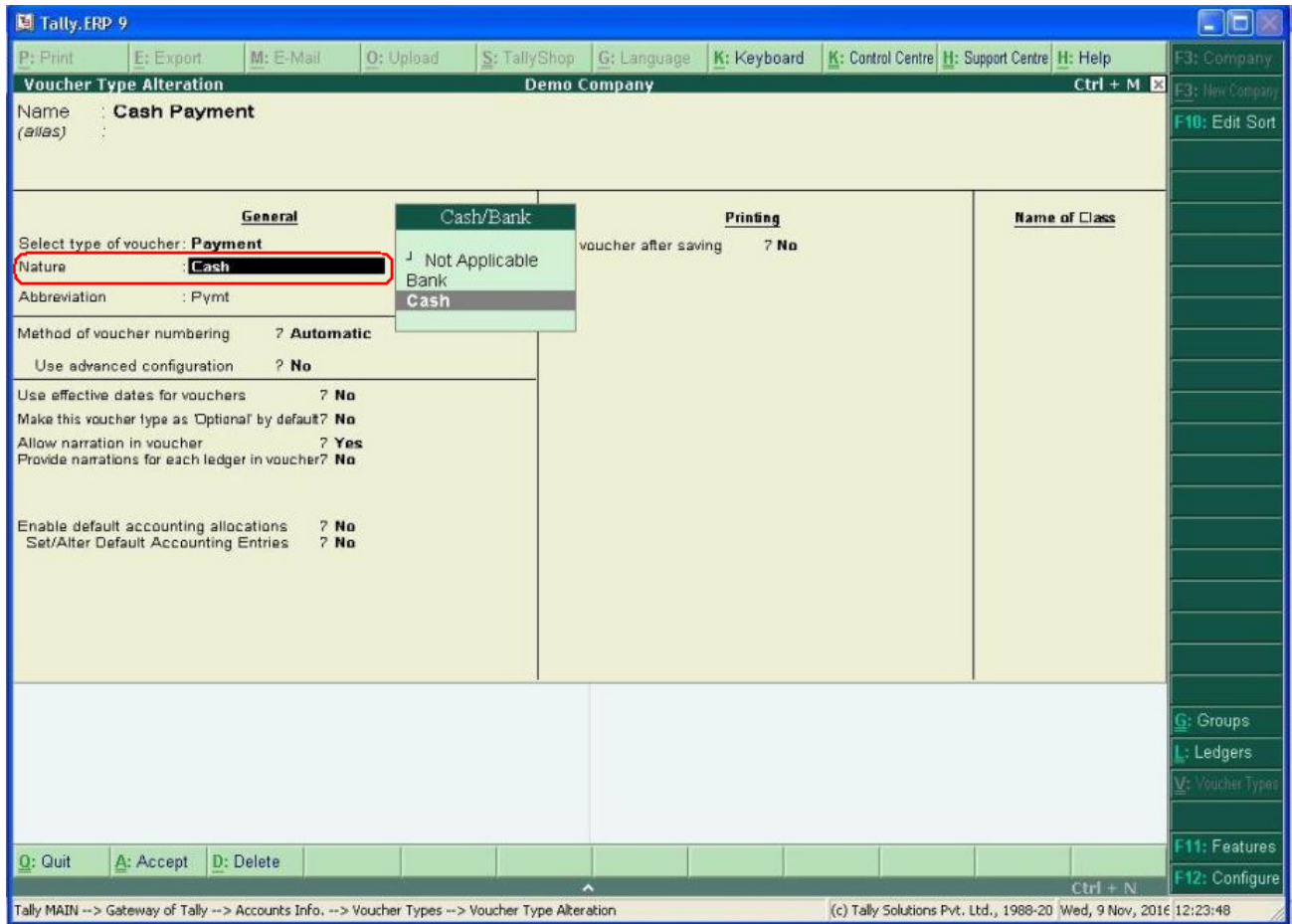
F1: Accounts **F2:** Inventory **F3:** Statutory **F4:** TSS **F5:** Audit

Accept ?
Yes or No

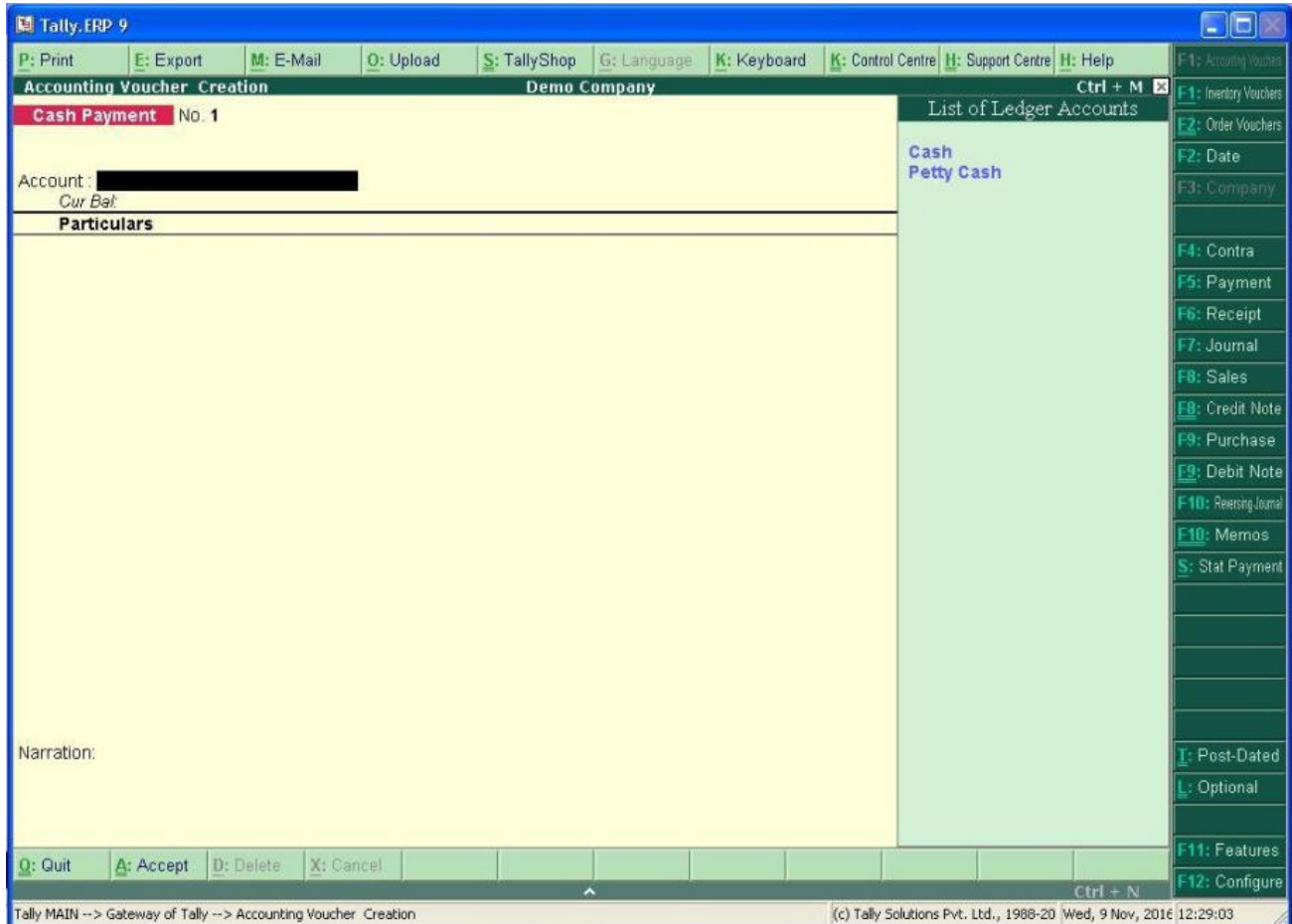
Detailed User Guide:

1. Navigate Through Gateway Of Tally → Accounts Info. → Voucher Types → Create/Alter (Payment or Receipt)

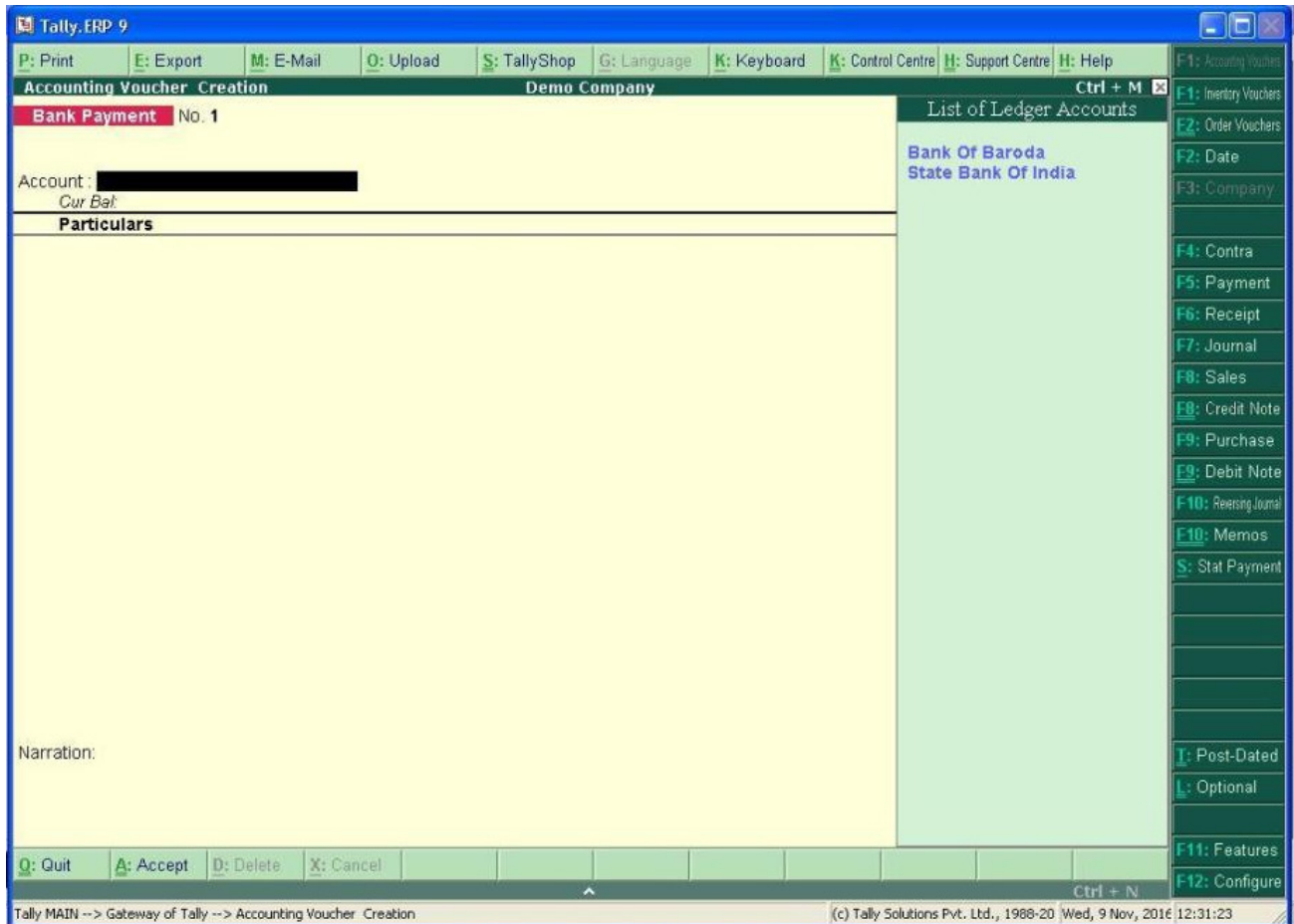
Select Nature of Voucher Type as Cash Or Bank (for Payment or Receipt) as Below.



2. Now you can see in the Voucher Entry screen of Cash Payment Voucher Type that only Cash Ledgers are available to select.

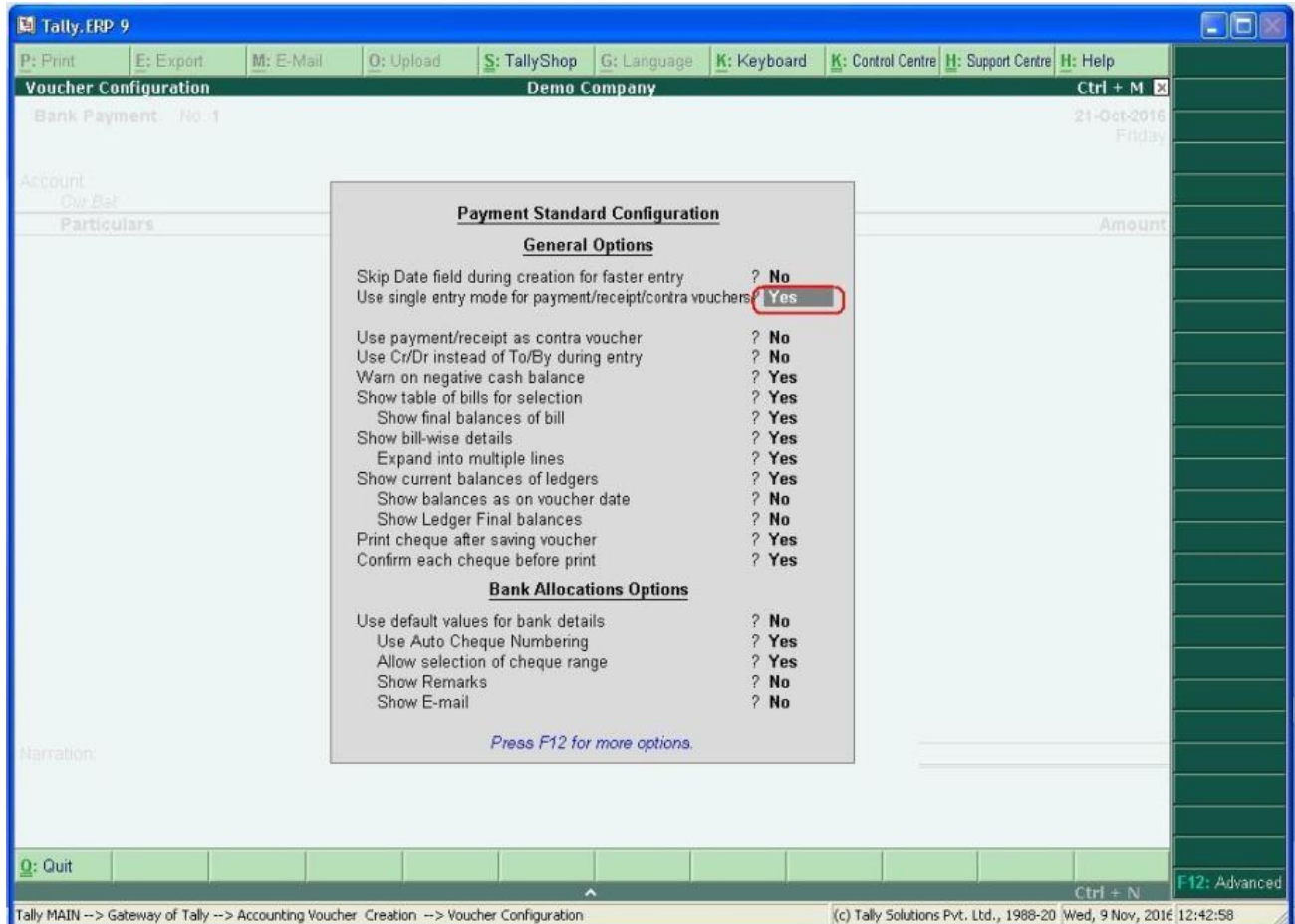


3. Same Way in Voucher Entry screen of Bank Payment Voucher Type that only Bank Ledgers are available to select.



4. Same Way after Setting Nature of Voucher Type in Cash Receipt/Bank Receipt, Only Cash or Bank Ledgers are available to select.

5. This features more functional where single entry mode is used for payment or receipt Vouchers. So by default is locked for not to change as below.



FAQ

Which version/releases of Tally.ERP 9 does the add-on support?

This add-on will work only with Tally ERP 9 Series A, release 3.0 onwards.

How will I get support for this add-on?

For any functional support requirements please do write to us on tdl@aplautomation.com or call us at +91-288-2660530/31 or +91-9099908115/9825098442.

If I need some enhancement / changes to be incorporated for the add-on, whom should I contact?

Please to write to us on tdl@aplautomation.com with your additional requirements and we will revert to you in 24 hours.

Will new features added be available to us?

We offer one year availability of all support and new features free of cost. After one year, nominal subscription cost will be applicable to you to continue to get free support and updates.

What will happen after one year?

There is no fixed annual charge to be payable mandatory. However if any changes are required in our Add-On to make compatible with New Release of Tally.ERP9 then the modification Charges will be applied.

I am using a multi site. Can I use the same Add-on for all the sites?

No, one Add-on will work only for 1 site. You need to purchase again if you want to use the same Add-on for more sites.

I have upgraded to a new Tally.ERP 9 Release. What will happen?

Normally, the add-on will work fine without any glitches. If you face problems with the Add-on, you can contact us for support.

Product and Features Page shows errors with the Add-on, What do I do?

Check first if the error is because of the Add-on or because of clashes between 2 TDLs (An add-on is also a TDL). In case of clashes, disable one or more TDLs and check which TDL has error. If the Add-on has a problem, you can report it to us.

My Tally went into educational mode after installing the add-on. What do I do?

Go into **Gateway of Tally** → **Press F12** → **Select Product and Features** -> **Press F4 and** remove the Add-on from the list and Restart Tally.