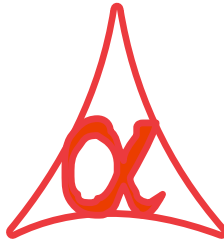




**POWER OF SIMPLICITY**

**Transport Selection**

**In Voucher Entry - 1.0**



**Alpha Automation Pvt. Ltd.**

**Head Office**

336-Madhva Plaza, Opp. SBI Bank,

Nr. Lal Bungalow, JAMNAGAR –Gujarat (India)

Phone No. : +91-288-2660530/31/32, +91-9099908115, 9825098442

Email : [tdl@aaplautomation.com](mailto:tdl@aaplautomation.com)

**Branch Office**

Rajkot : 807-Dhanrajni Complex, Nr. Hotel Imperial Palace, Dr. Yagnik Road, RAJKOT (Gujarat).

Gandhidham : 92-GMA Building, 2nd Floor, Plot No. -297, Sector-12B. GANDHIDHAM (Gujarat)

© 2012 Alpha Automation Pvt. Ltd.. All rights reserved.

Tally, Tally 9, Tally9, Tally.ERP, Tally.ERP 9, Shoper, Shoper 9, Shoper POS, Shoper HO, Shoper 9 POS, Shoper 9 HO, Tally Developer, Tally. Developer 9, Tally.NET, Tally Development Environment, Tally Extender, Tally Integrator, Tally Integrated Network, Tally Service Partner, Tally Academy & Power of Simplicity are either registered trademarks or trademarks of Tally Solutions Pvt. Ltd. in India and/or other countries. All other trademarks are properties of their respective owners.

Version: Alpha Automation Pvt. Ltd. / Transport Selection in Voucher Entry /1.0/ Jun-2018.

# Transport Selection

## In Voucher Entry -1.0

### Introduction:

This add-on provides transport name selection from table in Voucher Entry.

**Important!**

As a best practice it is advisable to back up your company data

### **Installation**

1. Copy the TCP file in Tally.ERP9 Folder.
2. Gateway of Tally → F12→ Product & Features → F4 (Manage Local TDL) → Select Yes in Load TDL on Start up and give the file name of TCP File. After pressing the Enter Key will show TDL Status which should be Active.

### **System requirements:**

No additional hardware / software infrastructure is required for executing and operation this applications module

## Setup Guide

For Tally.ERP 9 Series A Release 6.0 and above

Go to **Gateway of Tally > F11: Features > Add-on Features**

Set "Yes" to the options "Enable Transport Selection in Voucher Entry?"

Company: AAPL Automation

Add-On Features

Enable Transport Selection in Voucher Entry ? **Yes**

*Click on Shop button to buy Add-*

**F1: Accounts** **F2: Inventory** **F3: Statutory**

**Accept ?**  
**Yes** or **No**

Go to **Gateway of Tally** → **Accounts Info.** → **Voucher Types** → **Alter** → **Sales**  
 Set “Yes” to option “Enable Transport Selection in Voucher Entry?”

The screenshot shows the 'Voucher Type Alteration' window for 'Sales' in Tally ERP 9. The window is divided into three main sections: General, Printing, and Name of Class. The 'Enable Transport Selection in Voucher Entry?' option under the Printing section is highlighted with a red box and set to 'Yes'. Other options include 'Print voucher after saving' (No), 'Use for POS invoicing' (No), 'Default title to print' (Tax Invoice), 'Default bank' (ICICI Bank), and 'Set/alter declaration' (No). A 'Name of Class' field is present but empty. At the bottom right, there is an 'Accept?' dialog box with 'Yes or No' options. The status bar at the bottom shows the navigation path: Tally MAIN --> Gateway of Tally --> Accounts Info. --> Voucher Types --> Voucher Type Alteration.

General	Printing	Name of Class
Select type of voucher : <b>Sales</b>	Print voucher after saving ? <b>No</b>	
Abbreviation : Sale	<b>Enable Transport Selection in Voucher Entry ? Yes</b>	
Method of voucher numbering ? <b>Automatic</b>		
Use advanced configuration ? <b>No</b>		
Use effective dates for vouchers ? <b>No</b>	Use for POS invoicing ? <b>No</b>	
Make this voucher type as 'Optional' by default? <b>No</b>	Default title to print : <b>Tax Invoice</b>	
Allow narration in voucher ? <b>Yes</b>	Default bank : <b>ICICI Bank</b>	
Provide narrations for each ledger in voucher? <b>No</b>	Default jurisdiction :	
Enable default accounting allocations ? <b>No</b>	Set/alter declaration ? <b>No</b>	
Set/Alter Default Accounting Entries ? <b>No</b>		

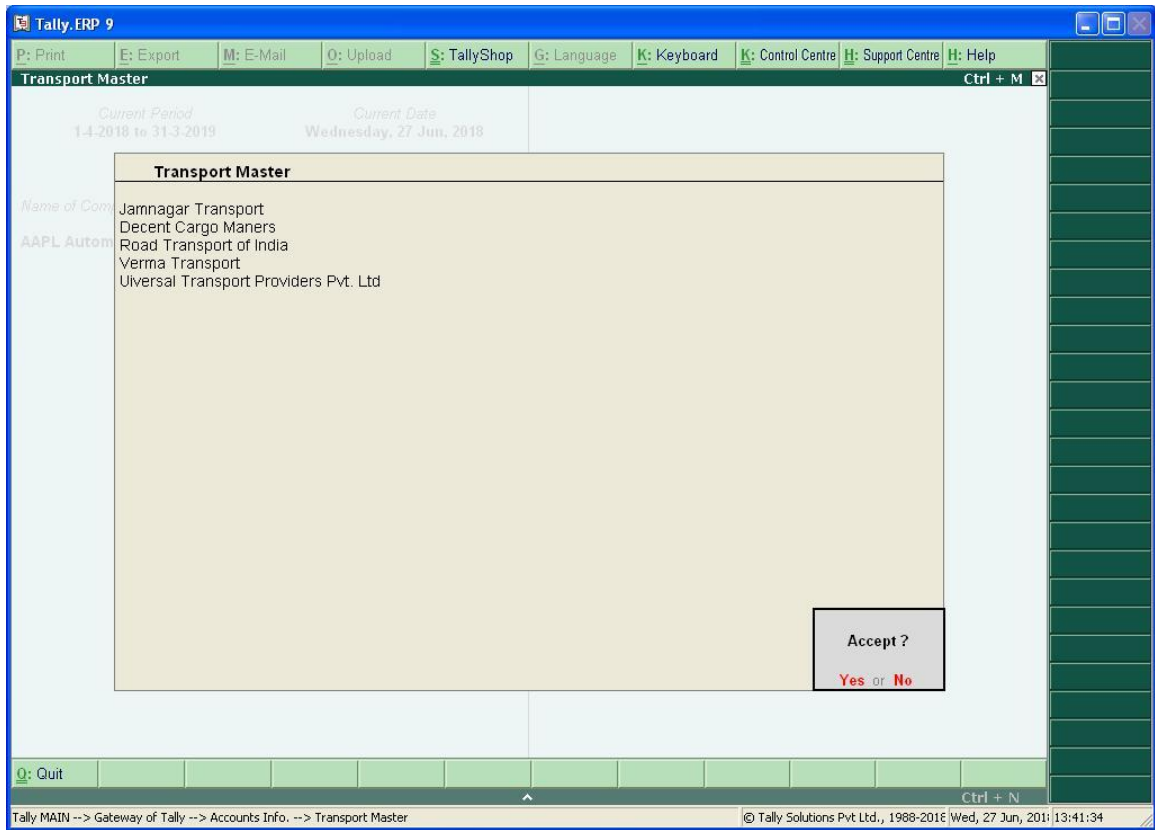
Accept ?  
Yes or No

Q: Quit    A: Accept    D: Delete    Ctrl + N

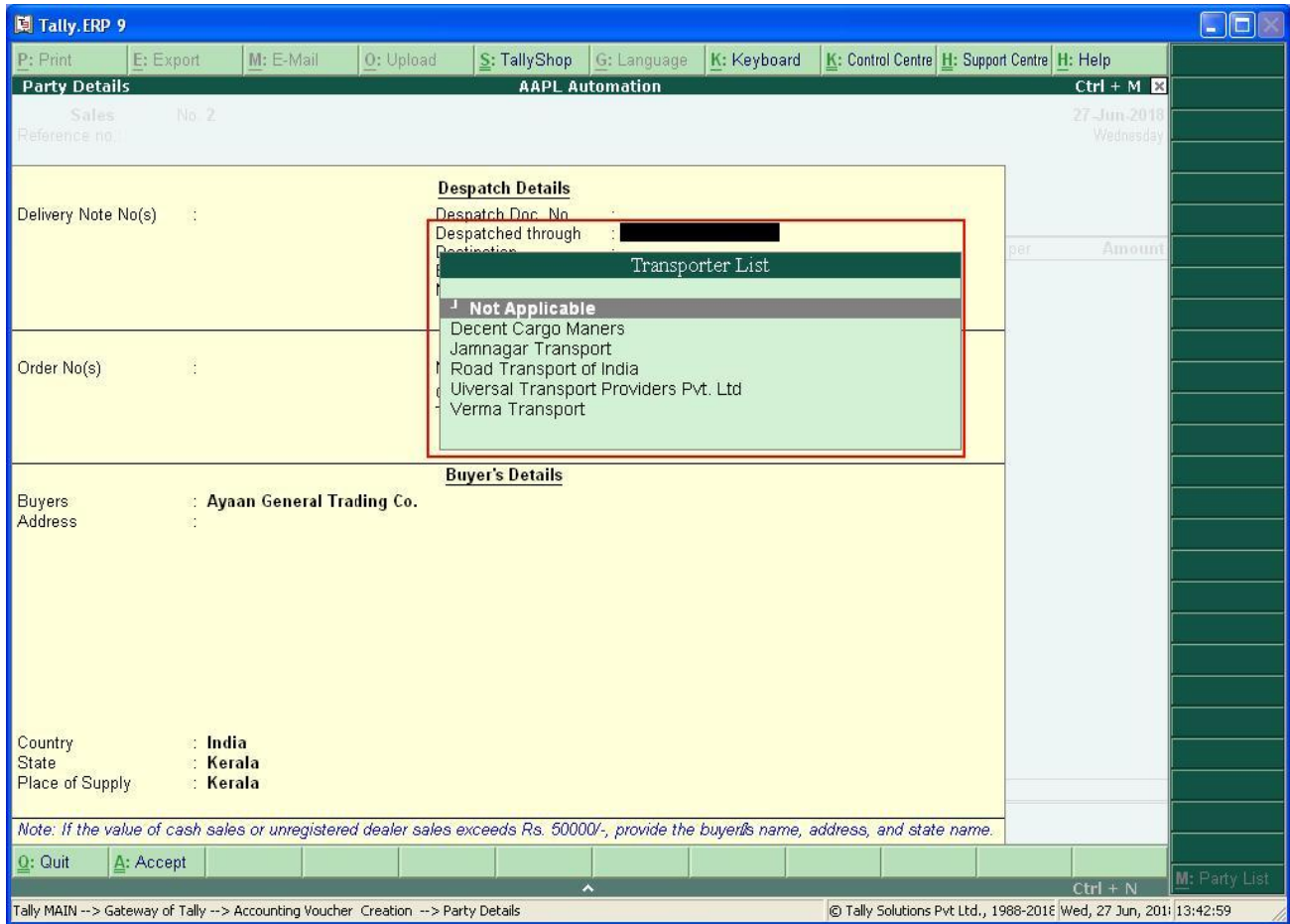
Tally MAIN --> Gateway of Tally --> Accounts Info. --> Voucher Types --> Voucher Type Alteration    © Tally Solutions Pvt Ltd., 1988-2016 | Wed, 27 Jun, 2011 | 13:36:50

## Detailed User Guide:

1. Navigate through **Gateway of Tally** → **Account Info** → **Transport Master**. In that menu user has to enter transporters name. And that list will be appearing while making voucher.



2. Navigate through **Gateway of Tally** → **Accounting Voucher** → **Sales** Create Sales Voucher as shown below.



**Note:** You can also create Transport Name while making voucher. For that user has to Press **Alt + C**.

# FAQ

## **Which version/releases of Tally.ERP 9 does the add-on support?**

This add-on will work only with Tally ERP 9 Series A, release 6.0 onwards.

## **How will I get support for this add-on?**

For any functional support requirements please do write to us on [tdl@aaplautomation.com](mailto:tdl@aaplautomation.com) or call us at +91-288-2660530/31/32 or +91-9099908115/ 9825098442.

## **If I need some enhancement / changes to be incorporated for the add-on, whom should I contact?**

Please to write to us on [tdl@aaplautomation.com](mailto:tdl@aaplautomation.com) with your additional requirements and we will revert to you in 24 hours.

## **Will new features added be available to us?**

We offer one year availability of all support and new features free of cost. After one year, nominal subscription cost will be applicable to you to continue to get free support and updates.

## **What will happen after one year?**

There is no fixed annual charge to be payable mandatory. However if any changes are required in our Add-On to make compatible with New Release of Tally.ERP9 then the modification Charges will be applied.

## **I am using a multi site. Can I use the same Add-on for all the sites?**

No, one Add-on will work only for 1 site. You need to purchase again if you want to use the same Add-on for more sites.

## **I have upgraded to a new Tally.ERP 9 Release. What will happen?**

Normally, the add-on will work fine without any glitches. If you face problems with the Add-on, you can contact us for support.



**Product and Features Page shows errors with the Add-on, What do I do?**

Check first if the error is because of the Add-on or because of clashes between 2 TDLs (An add-on is also a TDL). In case of clashes, disable one or more TDLs and check which TDL has error. If the Add-on has a problem, you can report it to us.

**My Tally went into educational mode after installing the add-on. What do I do?**

Go into **Gateway of Tally** → **Press F12** → **Select Product and Features** -> **Press F4** and remove the Add-on from the list and Restart Tally.