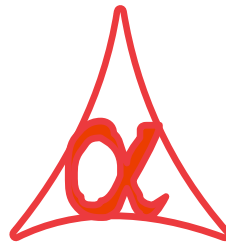




POWER OF SIMPLICITY

Export Ledgers & Stock Items of
Selected Group in XML -1.0



Alpha Automation Pvt. Ltd.

Head Office

104-The Grand Apurva, Nr. Hotel Fortune Palace,

Nr. Digjam Circle, Airport Road - JAMNAGAR –Gujarat (India)

Phone No. : +91-288-2713956/57/58, 9023726215/16, 9099908115, 9825036442

Email : mail@aaplautomation.com

Branch Office

Rajkot : 807-Dhanrajni Complex, Nr. Hotel Imperial Palace, Dr. Yagnik Road, RAJKOT (Gujarat).

Gandhidham : 92-GMA Building, 2nd Floor, Plot No. -297, Sector-12B. GANDHIDHAM (Gujarat)

© 2020 Alpha Automation Pvt. Ltd. All rights reserved.

Tally, Tally 9, Tally9, Tally.ERP, Tally.ERP 9, Shoper, Shoper 9, Shoper POS, Shoper HO, Shoper 9 POS, Shoper 9 HO, Tally Developer, Tally. Server 9, Tally Developer, Tally. Developer 9, Tally.NET, Tally Development Environment, Tally Prime, TallyPrimeDeveloper, Tally Prime Server, Tally Extender, Tally Integrator, Tally Integrated Network, Tally Service Partner, Tally Academy & Power of Simplicity are either registered trademarks or trademarks of Tally Solutions Pvt. Ltd. in India and/or other countries. All other trademarks are properties of their respective owners.

Version: Alpha Automation Pvt. Ltd. /Export Ledgers & Stock Items of Selected Group in XML/1.0/
March-2021

Export Ledgers & Stock Items of Selected Group in XML - 1.0

Introduction

- By Default in Tally, when we select Export Masters (Ledgers and Stock Items), All ledgers and stock items get exported in XML. User cannot select any specific group. This Add-on allows user to Select Ledger Group or Stock Group while exporting Master Data. So Masters related to that group only will be exported.

Benefits

- Very useful when user wants to export Master Details of Selected Group only and import the same in another company.

What's New?

- Compatible with TallyPrime

Important!

Take back up of your company data before activating the Add-on.

Once you try/purchase an Add-on, follow the steps below to configure the Add-on and use it.

Installation

1. Copy the TCP file in TallyPrime Folder.
2. Gateway of Tally → F1 (Help) → TDL & Add-on → F4 (Manage Local TDL) → Select Yes in Load TDL on Startup and give the file name of TCP File. After pressing the Enter Key will show TDL Status which should be as Loaded.

System requirements:

No additional hardware / software infrastructure is required for executing and operation this applications module

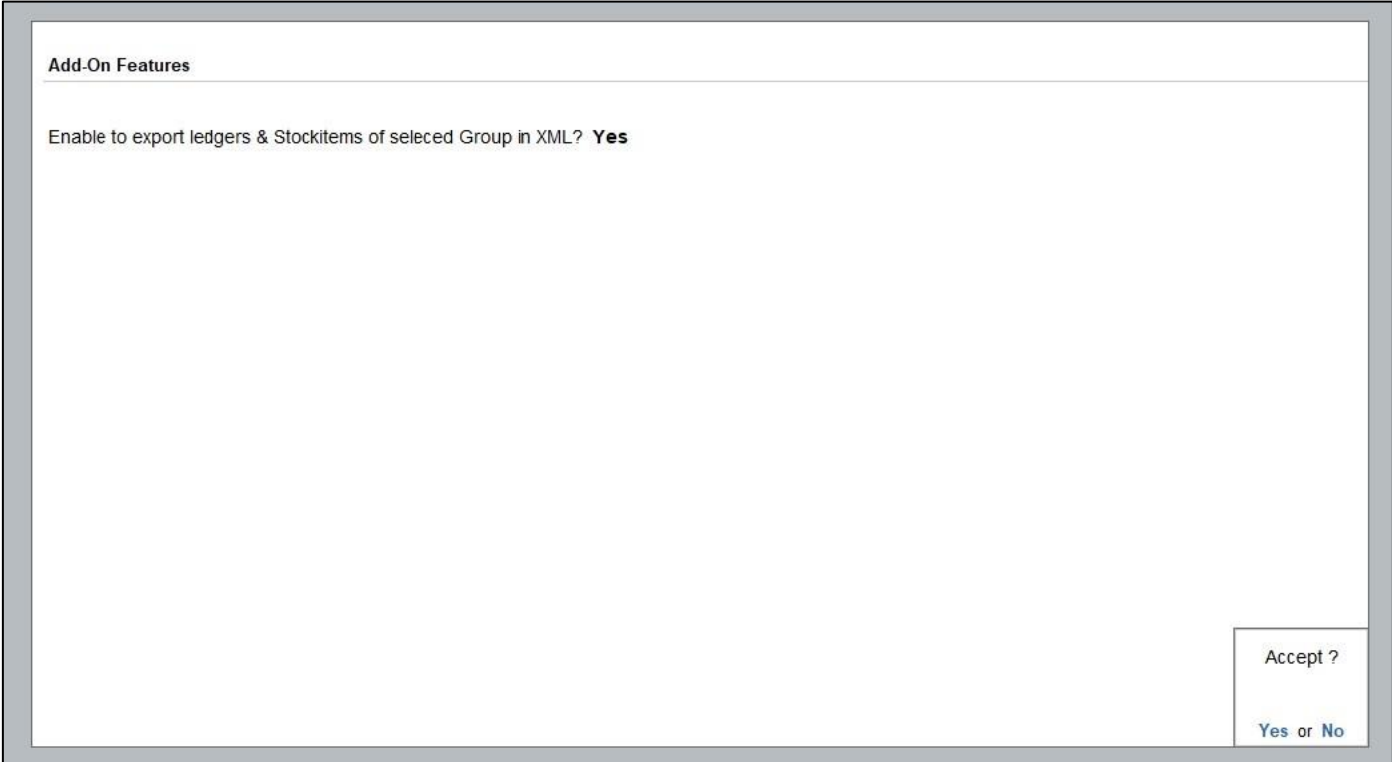
1. Activate the Add-on.

For TallyPrime Release 1.0

Go to **Gateway of Tally** → **F1: Help** → **TDL & Add-On** → **F6: Add-On Features**.

Alternatively, you may press **CTRL + ALT + T** from any menu to open TDL Management report and then press **F6: Add-On Features**

Set “Yes” to the options “**Enable to Export Ledgers & Stock Items of Selected Group in XML?**”



Add-On Features

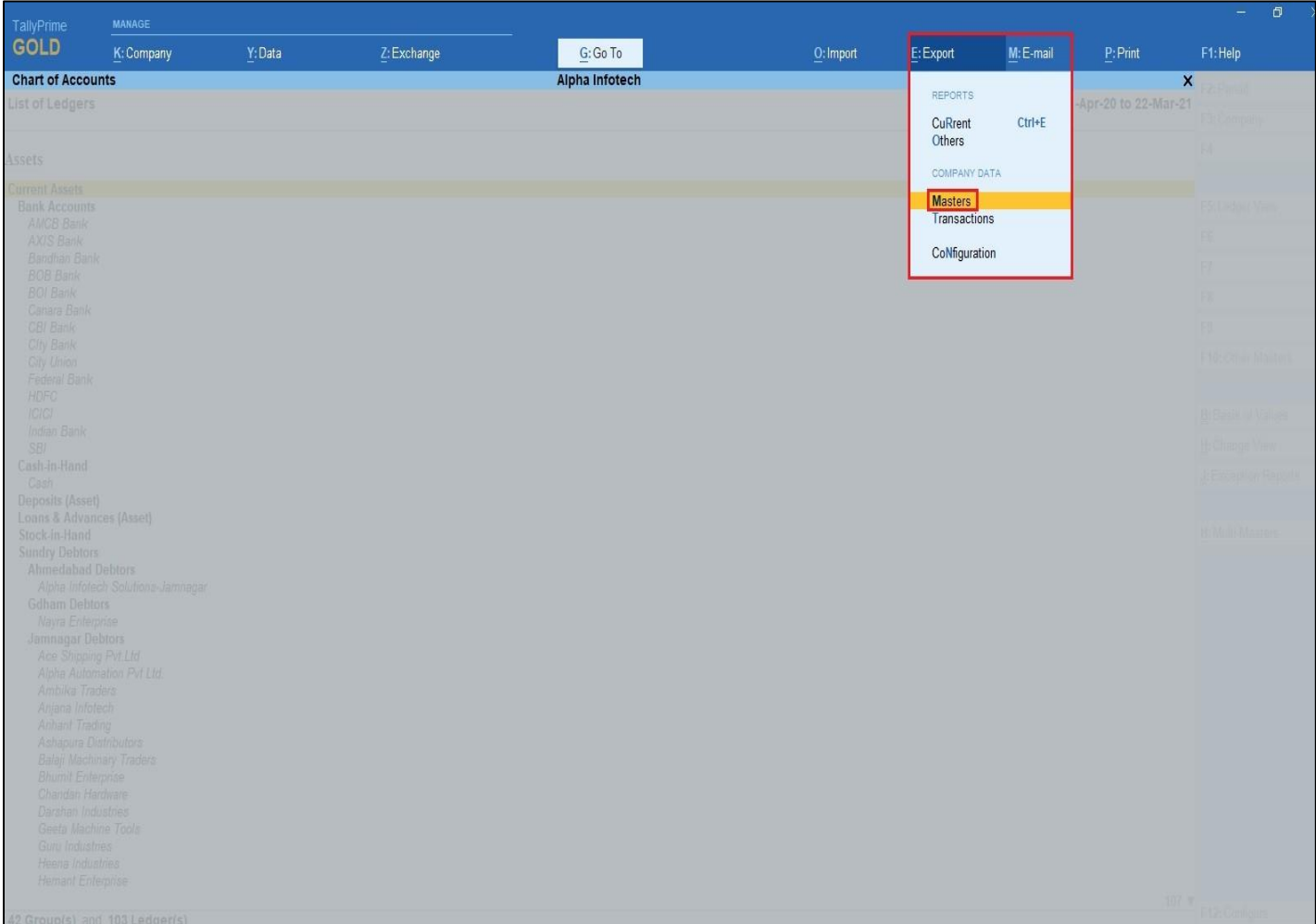
Enable to export ledgers & Stockitems of selected Group in XML? **Yes**

Accept ?

Yes or No

Detailed User Guide:

1. Navigate Through Gateway of Tally → Chart Of Accounts → Ledger → Export As Shown Below :



The screenshot displays the TallyPrime interface. At the top, the title bar shows 'TallyPrime GOLD' and 'MANAGE'. Below it, the menu bar includes 'K: Company', 'Y: Data', 'Z: Exchange', 'G: Go To', 'O: Import', 'E: Export', 'M: E-mail', 'P: Print', and 'F1: Help'. The main window title is 'Alpha Infotech'. The 'Chart of Accounts' section is active, showing a list of ledgers under 'Current Assets'. A context menu is open over the 'Export' option, with 'Masters' highlighted. The menu items are: REPORTS (CuRrent, Others), COMPANY DATA (Masters, Transactions, CoNfiguration), and F12: Period (Apr-20 to 22-Mar-21). The list of ledgers includes Bank Accounts (AMCB Bank, AXIS Bank, Bandhan Bank, BOB Bank, BOI Bank, Canara Bank, CBI Bank, City Bank, City Union, Federal Bank, HDFC, ICICI, Indian Bank, SBI), Cash-in-Hand (Cash), Deposits (Asset), Loans & Advances (Asset), Stock-in-Hand, and Sundry Debtors (Ahmedabad Debtors, Alpha Infotech Solutions-Jamnagar, Gidham Debtors, Navra Enterprise, Jamnagar Debtors, Ace Shipping Pvt Ltd, Alpha Automation Pvt Ltd, Ambika Traders, Anjana Infotech, Anhani Trading, Ashapura Distributors, Balaji Machinery Traders, Bhunit Enterprise, Chandan Hardware, Darshan Industries, Geeta Machine Tools, Guru Industries, Heena Industries, Hemant Enterprise).

2. Go To Export → Masters As Shown Below :

Export Configuration

Type of master

List of Configurations

Show More

Report Details

| | |
|---|------------------|
| Type of master | Ledgers |
| Type of Group Master | Jamnagar Debtors |
| Include dependent masters | No |
| Export closing balance as opening balance | No |
| Closing balance as on | 22-Mar-21 |

Export Settings

| | |
|-------------|--------------------------|
| File Format | XML (Data Interchange) |
| Export to | Local drive |
| Folder Path | D:\TallyPrime new\Export |
| File Name | Jamnagar.xml |

Report Details

Type of Master : **Ledgers**

Type of Group Master :

ExportGroups, Primary

9 ▲

- Current Liabilities
- Deposits (Asset)
- Direct Expenses
- Direct Incomes
- Duties & Taxes
- Fixed Assets
- Functions
- Gdham Creditors
- Gdham Debtors
- Indirect Expenses
- Indirect Incomes
- Investments
- Jamnagar Creditors
- Jamnagar Debtors
- Loans & Advances (Asset)
- Loans (Liability)
- Misc. Expenses (ASSET)
- Parts
- Provisions
- Purchase Accounts
- Rajkot Creditors
- Rajkot Debtors

12 ▼

Configure
Send

3. Export As Shown Below :

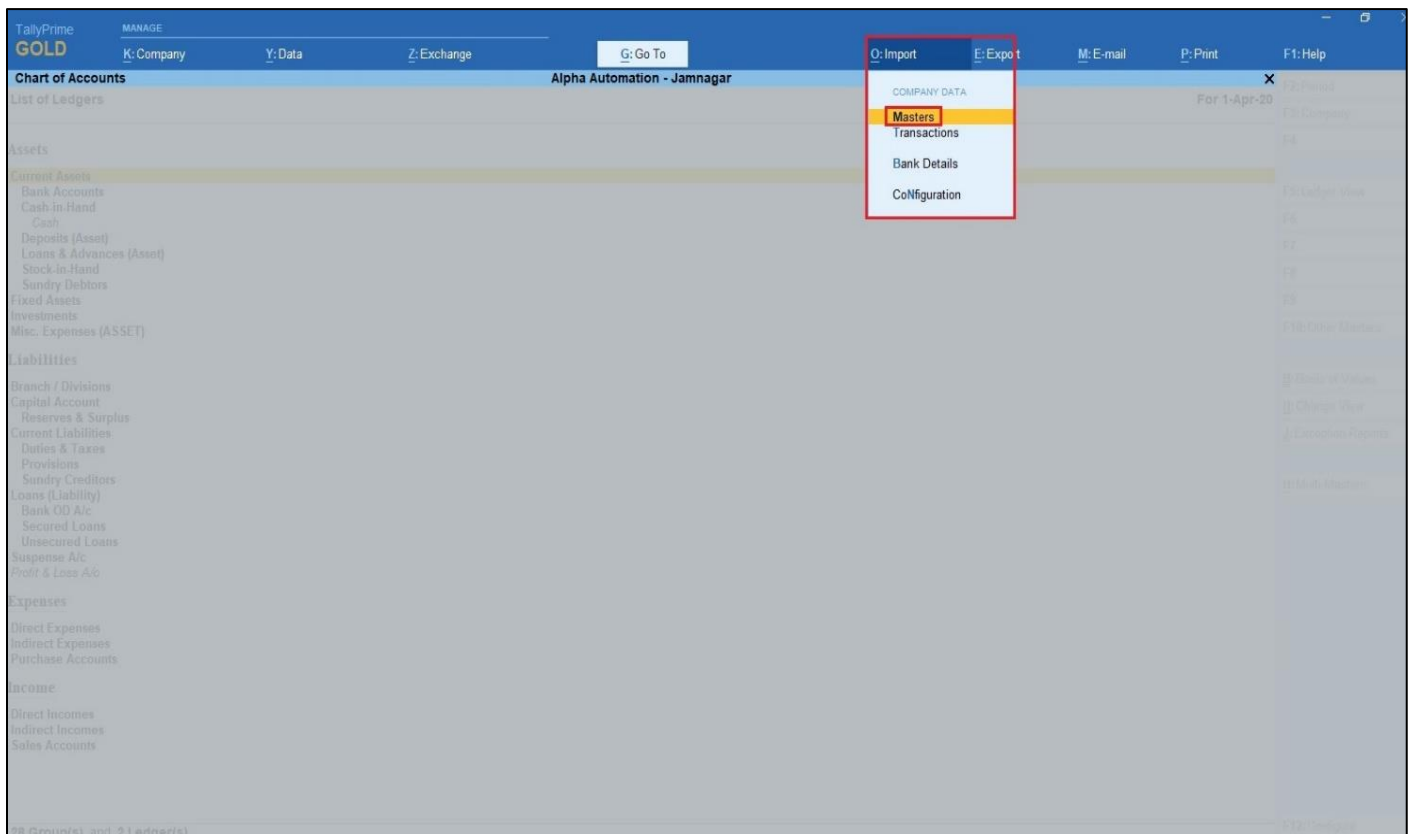
Export

| | |
|------------------------------------|--------------------------|
| Type of Masters | : Ledgers |
| Include dependent masters | : No |
| Export Closing Balances as Opening | : No |
| File Format | : XML (Data Interchange) |
| Export to | : Local drive |
| Folder Path | : D:\TallyPrime new |
| File Name | : Jamnagar |

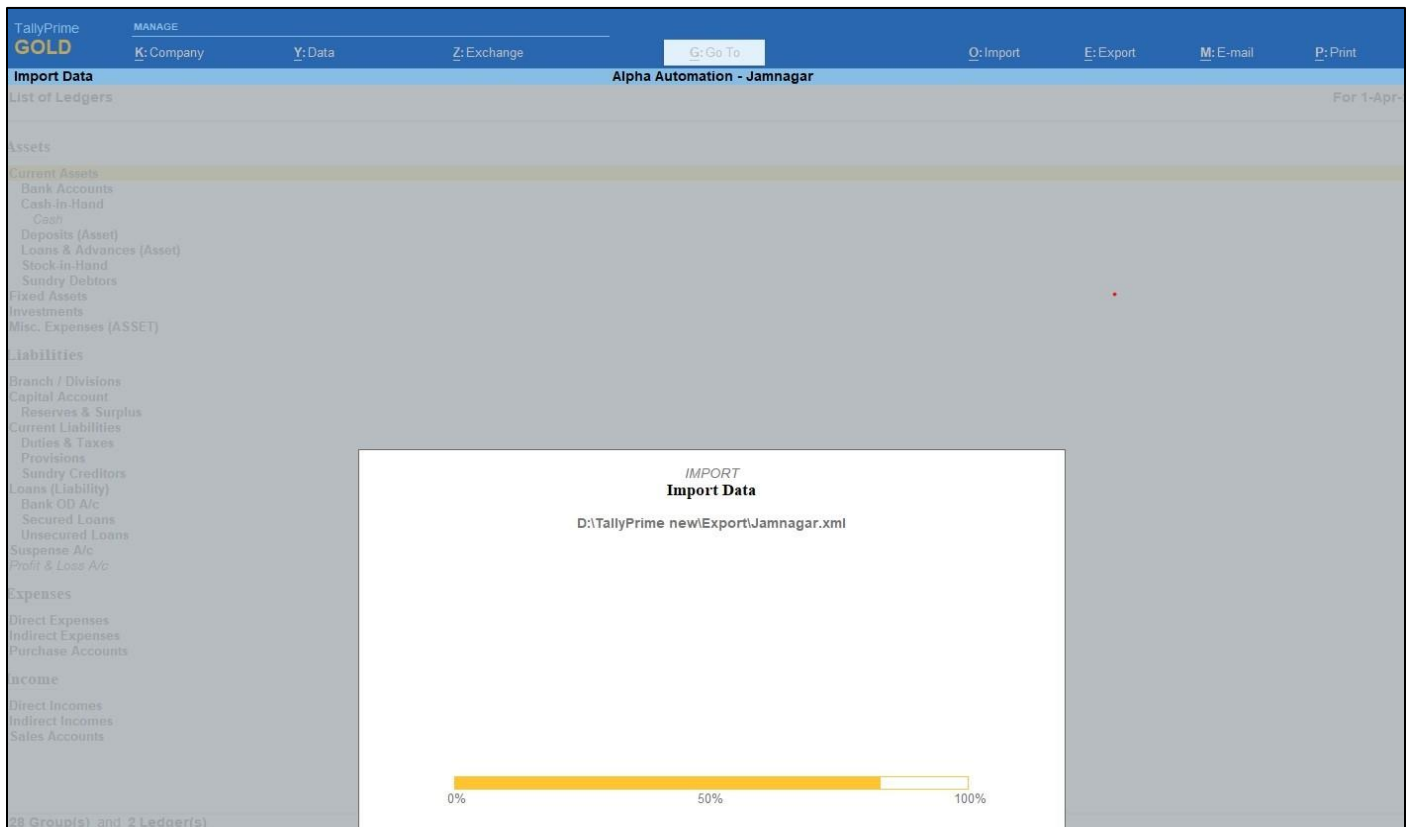
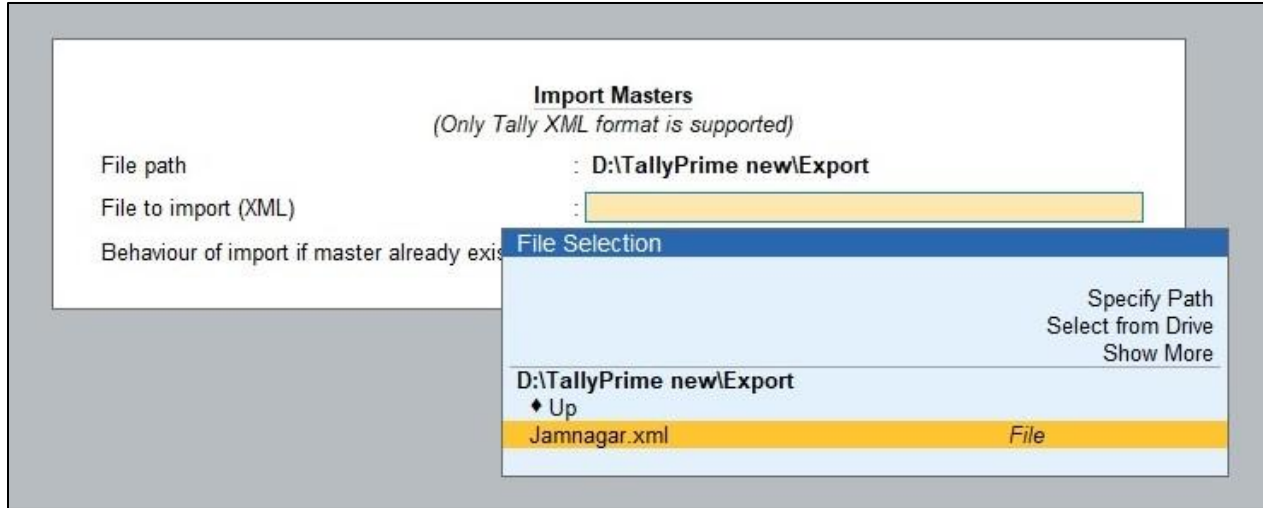
C: Configure

E: Send

4. Create New Company and Import Ledgers As Shown Below :



5. Import Ledger As Shown Below :



6. Imported Ledgers of Jamnagar Debtors Group As Shown Below :

| Chart of Accounts | | Alpha Automation - Jamnagar | X |
|------------------------------|--|-----------------------------|----------------------|
| List of Ledgers | | | For 1-Apr-20 |
| Assets | | | F2: Period |
| Current Assets | | | F3: Company |
| Bank Accounts | | | F4 |
| Cash-in-Hand | | | F5: Ledger View |
| Cash | | | F6 |
| Deposits (Asset) | | | F7 |
| Loans & Advances (Asset) | | | F8 |
| Stock-in-Hand | | | F9 |
| Sundry Debtors | | | F10: Other Masters |
| Jamnagar Debtors | | | B: Basis of Values |
| Ace Shipping Pvt.Ltd | | | H: Change View |
| Alpha Automation Pvt Ltd. | | | J: Exception Reports |
| Ambika Traders | | | H: Multi-Masters |
| Anjana Infotech | | | |
| Anhant Trading | | | |
| Ashapura Distributors | | | |
| Balaji Machinery Traders | | | |
| Bhumit Enterprise | | | |
| Chandan Hardware | | | |
| Darshan Industries | | | |
| Geeta Machine Tools | | | |
| Guru Industries | | | |
| Heena Industries | | | |
| Hemant Enterprise | | | |
| Honest Corporation | | | |
| Janki Enterprise | | | |
| Jay Ambe Tools & Nut Bolt | | | |
| Jaydeep Enterprise | | | |
| Jyoti Enterprise | | | |
| Kinjal Enterprise | | | |
| Madhusudan Enterprise | | | |
| Mahavir Traders | | | |
| Mahendrakumar Brothers | | | |
| Manali Electronics | | | |
| Nirma Limited | | | |
| Nitu Sales Agency | | | |
| RB Enterprise | | | |
| Sanajana Infotech | | | |
| Fixed Assets | | | |
| Investments | | | |
| Misc. Expenses (ASSET) | | | |
| 29 Group(s) and 30 Ledger(s) | | | F12: Configure |

Note : Similarly user can Import Stock Items of Selected Group.

FAQ

Which version/release of TallyPrime does the add-on support?

This add-on will work only from TallyPrime Release 1.0 onwards.

How will I get support for this add-on?

For any functional support requirements please do write to us on mail@aaplautomation.com or call us at +91-288-2713956/57/58, +91-9023726215/16, 9099908115, 9825036442.

If I need some enhancements / changes to be incorporated for the add-on, whom should I contact?

Please to write to us on mail@aaplautomation.com with your additional requirements and we will revert to you in 24 hours.

Will new features added be available to us?

We offer one year availability of all support and new features free of cost. After one year, nominal subscription cost will be applicable to you to continue to get free support and updates.

What will happen after one year?

There is no fixed annual charge to be payable mandatory. However if any changes are required in our Add-On to make compatible with New Release of TallyPrime then the modification Charges will be applied.

I am using a multi-site. Can I use the same Add-on for all the sites?

No, one Add-on will work only for 1 site. You need to purchase again if you want to use the same Add-on for more sites.

TDL Management screen shows errors with the Add-on. What do I do?

Check whether the error is because of the Add-on or because of clashes between 2 TDLs (An add-on is also a TDL). In case of clashes, disable one or more TDLs and check which

TDL has the error. If the Add-on has a problem, you can report it to us.

My Tally went into educational mode after installing the add-on. What do I do?

Go into **Gateway of Tally** → **Press F1 (Help)** → **TDL & Add-on** → **Press F4 and** remove the Add-on from the list and Restart Tally.